



## 6GHZ N MALE TO SMA FEMALE

### ADAPTER P/NO.STI01-0163



#### SPECIFICATION

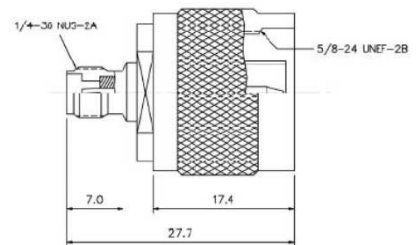
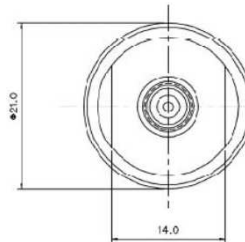
Frequency	DC-6GHz
VSWR:	1.2:1(Max.)
Impedance:	50Ohm
Durability:	500 Cycles
Temperature:	-65~155℃

#### MATERIAL LIST

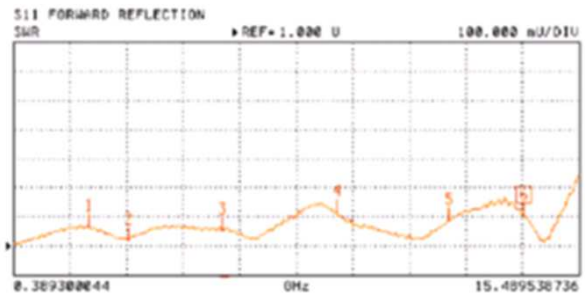
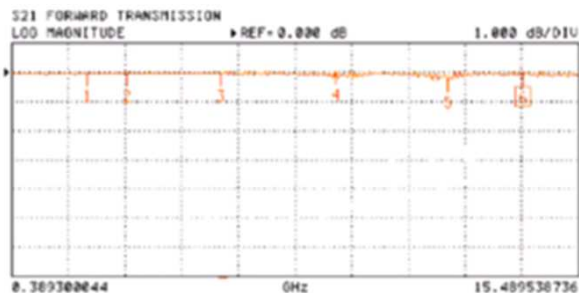
Part	Material	Plated
Body	Brass	Nickel
Center Pin	P.3.	Gold
Insulator	Teflon	
C-Ring	Stainless Steel	
Gasket	Silicone	
Shell	Brass	Nickel

#### OUTLINE DRAWING

Unit:mm



#### TESTING DATA ( 100% S-PARAMETER TESTED)



Any more request, please contact sales@solvangtech.com. Thank you ~