

### 10GHZ N FEMALE TO SMA FEMALE

### ADAPTER

### P/NO.STI01-0118



#### SPECIFICATION

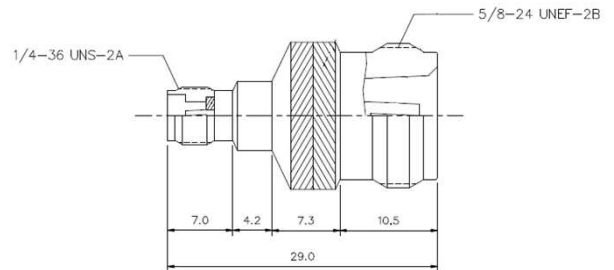
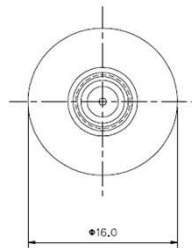
Frequency	DC-10GHz
VSWR:	1.25:1(Max.)
Impedance:	50Ohm
Durability:	500 Cycles
Temperature:	-65~155℃

#### MATERIAL LIST

Part	Material	Plated
Body	Brass	Copper-Tin_Zinc
Center Contact	Phosphor Bronze	Gold
Insulator	Teflon	

#### OUTLINE DRAWING

Unit:mm



#### TESTING DATA ( 100% S-PARAMETER TESTED)

